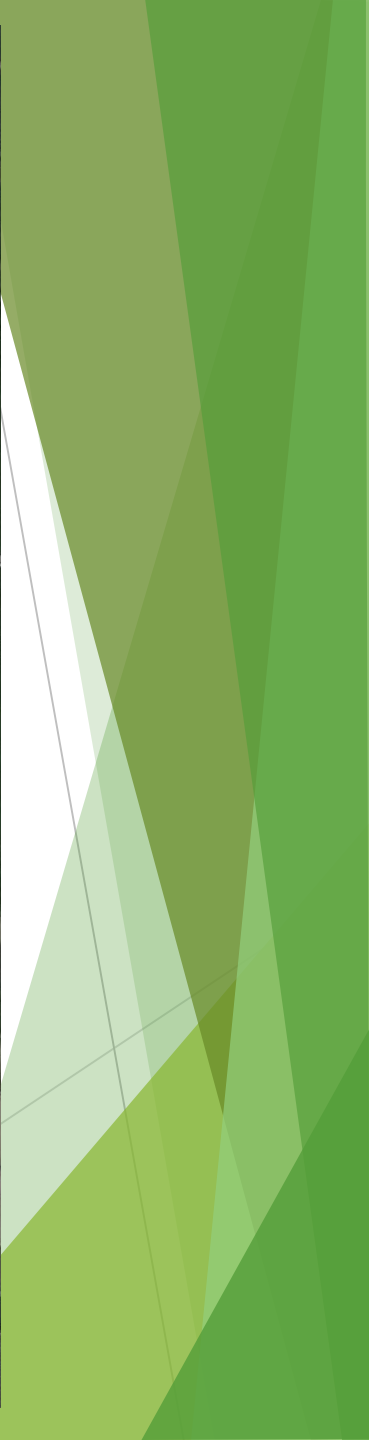


A Review of Agricultural Film Recycling in the US: A Look at the Obstacles and Opportunities



By Gene Jones
Southern Waste Information eXchange, Inc.
Post Office Box 960
Tallahassee, FL 32302
Phone: 1-850-386-6280
Email: gene@swixusa.org







How to Calculate the Volume

- ▶ Ag film mulch:

180 to 220 lbs per
acre/planting

- ▶ Drip tape:

70 - 77 lbs per acre/planting







Ag Film Stock Piles





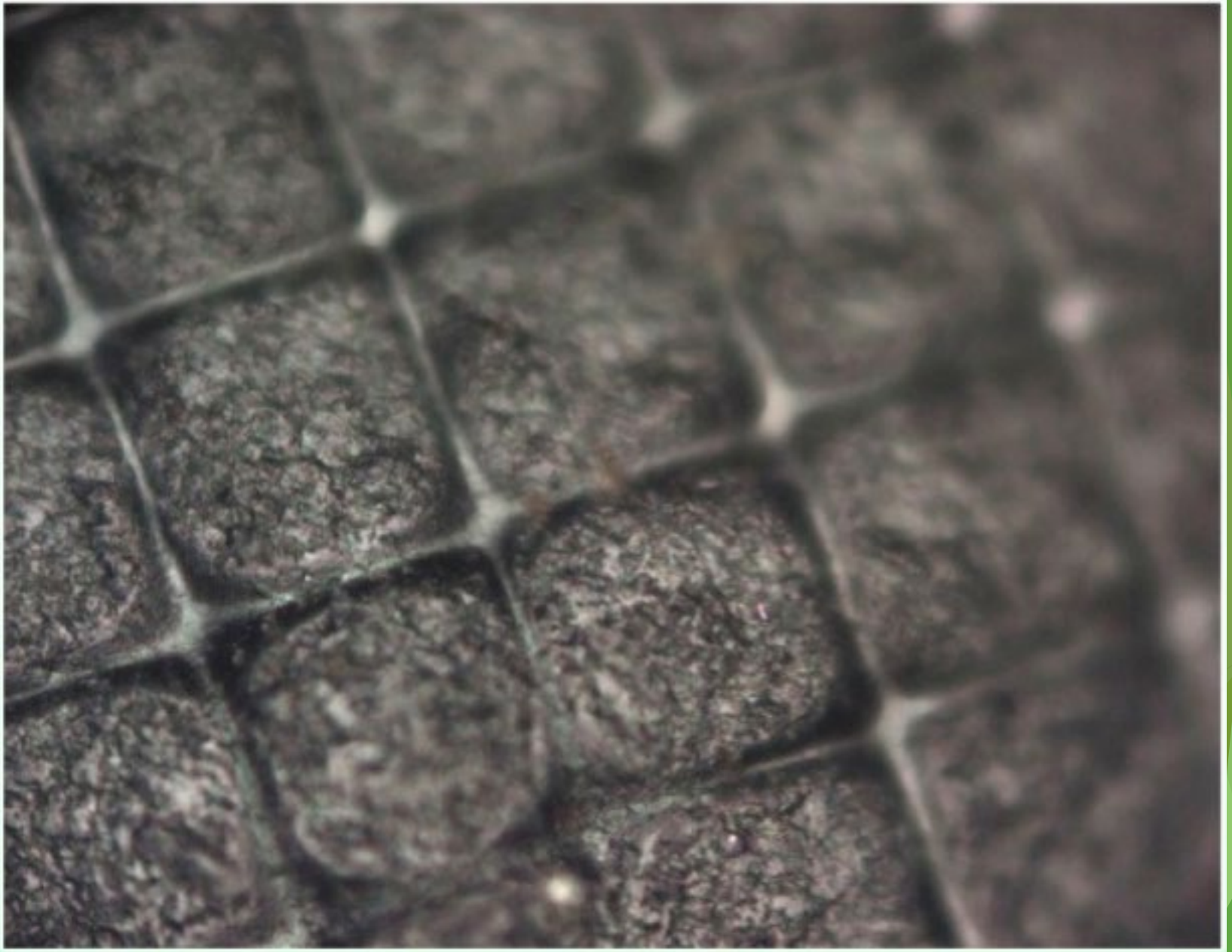


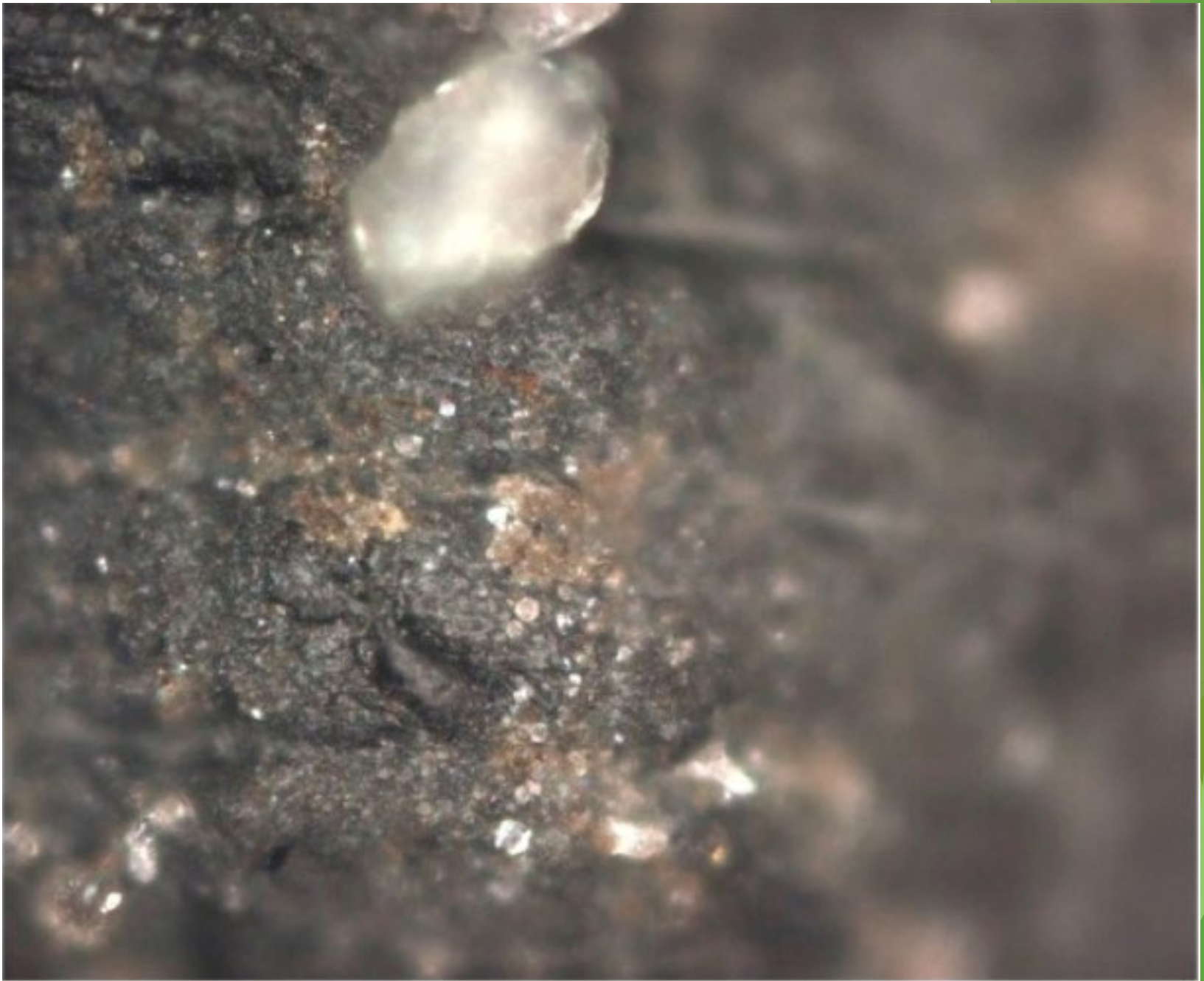
















16.14^{oz}

MODE ON/OFF TARE



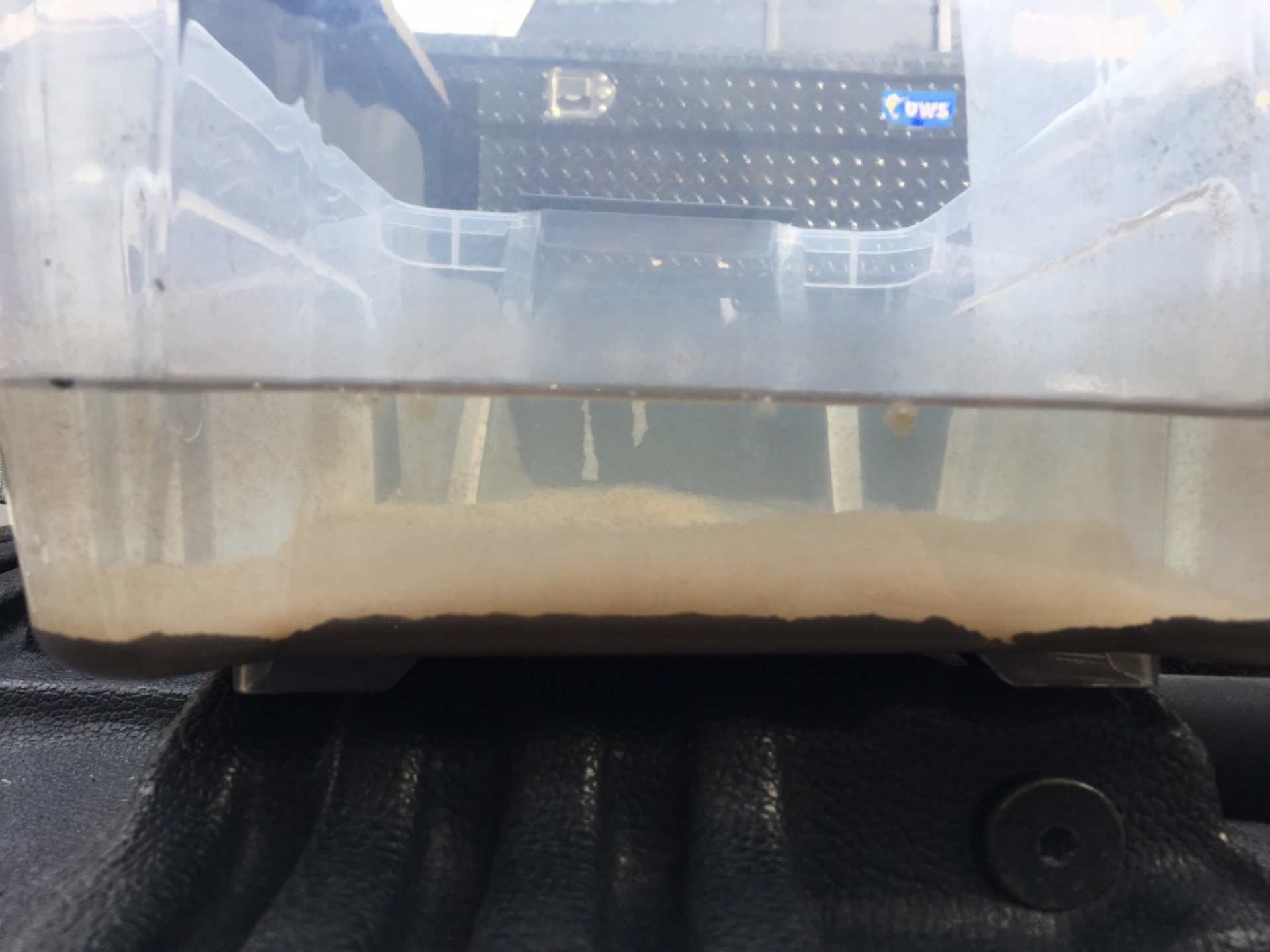






FOR SALE

UWS







SOUTHERN WASTE
INFORMATION EXCHANGE



Cuisinart

4.16

MODE

ON/OFF

TARE



Cuisinart

0.46 oz

MODE

ON/OFF

TARE



Cuisinart

0.02 oz

MODE ON/OFF TARE

Results

- ▶ Total Sample Weight: 16.14 oz
- ▶ Net Plastic after cleaning 4.16 oz
- ▶ Total Soil and Moisture 11.98 oz 74%
- ▶ Net Plastics 4.16 oz 26%

- ▶ **Contamination Breakdown:**
- ▶ Soil (e.g sand granules) 8.46 oz 71%
- ▶ Soil Micro Dust 1.02 oz 9%
- ▶ Estimated Moisture: 2.5 oz 21%









Opportunities

- ▶ Alternative Fuel for Cement Industry
- ▶ Plastics to Fuel/Chemical Conversion











